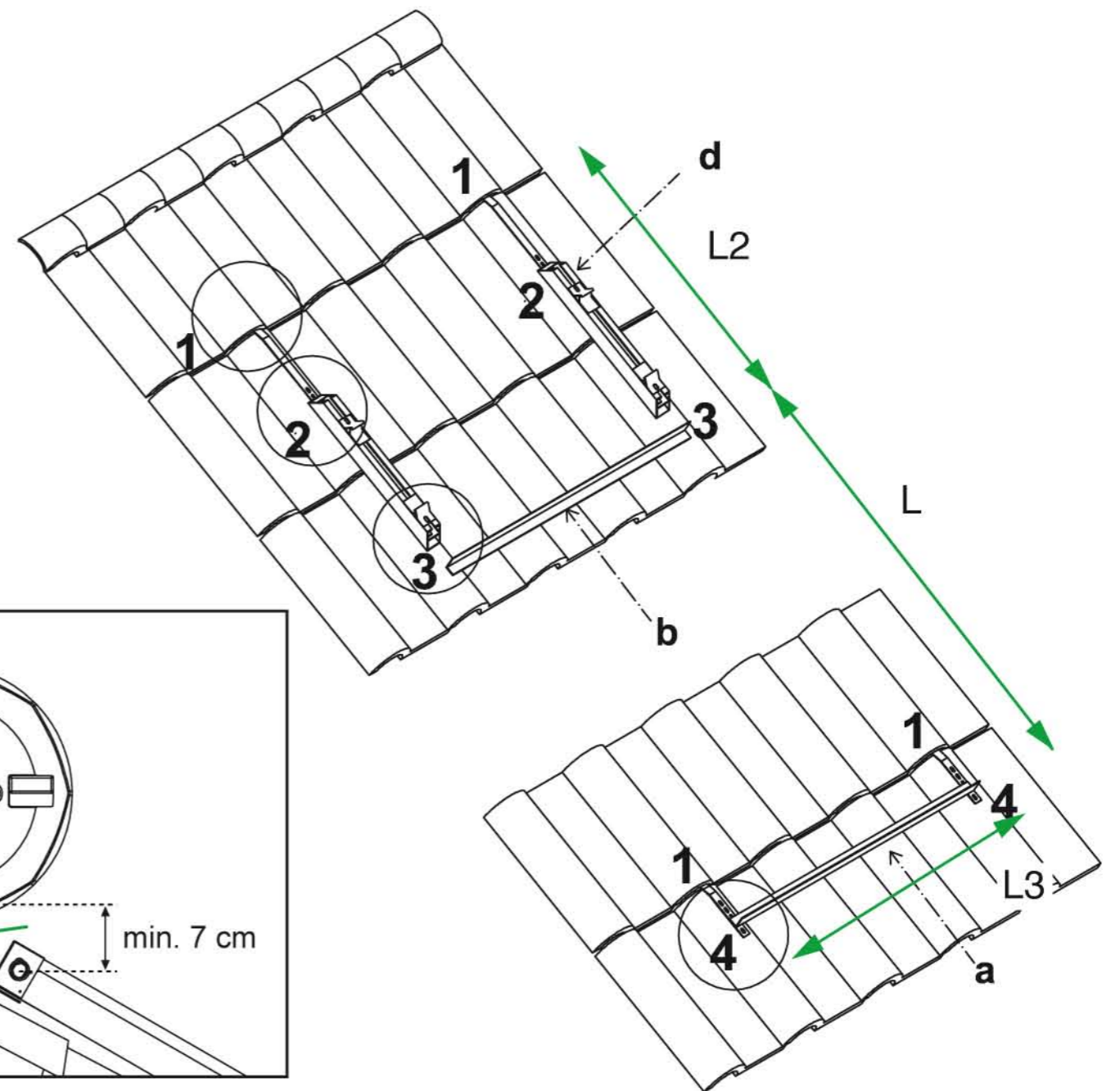


Technical Data Natural circulation support structure

Kit for pitched roofs

Component	Symbol	Kit for 1 panel	Kit for 2 panels	Kit for 1 panels
Floor track				
Panda 2,6	a	1 of 1130 mm	1 of 2330 mm	1 of 3170 mm
Koala 2,0		1 of 1100 mm	1 of 2070 mm	
Upper track				
Panda 2,6	b	1 of 1130 mm	1 of 2330 mm	1 of 3170 mm
Koala 2,0		1 of 1100 mm	1 of 2070 mm	
Storage tank	d	2 of 600 mm	2 of 600 mm	2 of 600 mm
U-bolt	f	4	4	4
Undertile	h	6	6	6
Track U-bolt	c	2	2	2



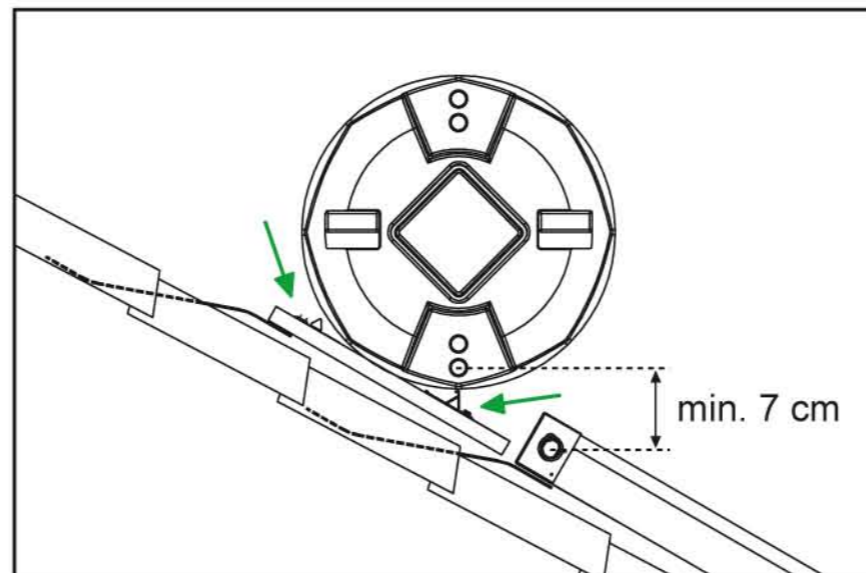
The distance "L1" between the "a" and "b" tracks is equal to the solar collector's length.

Use the slotted holes on the "h" U-bolt to determine the right final position.

L1 = 2162±5 mm for KOALA 2,0 panels (solar KIT KNS)
 L1 = 2400±5 mm for PANDA 2,6 panels (solar KIT CNS)

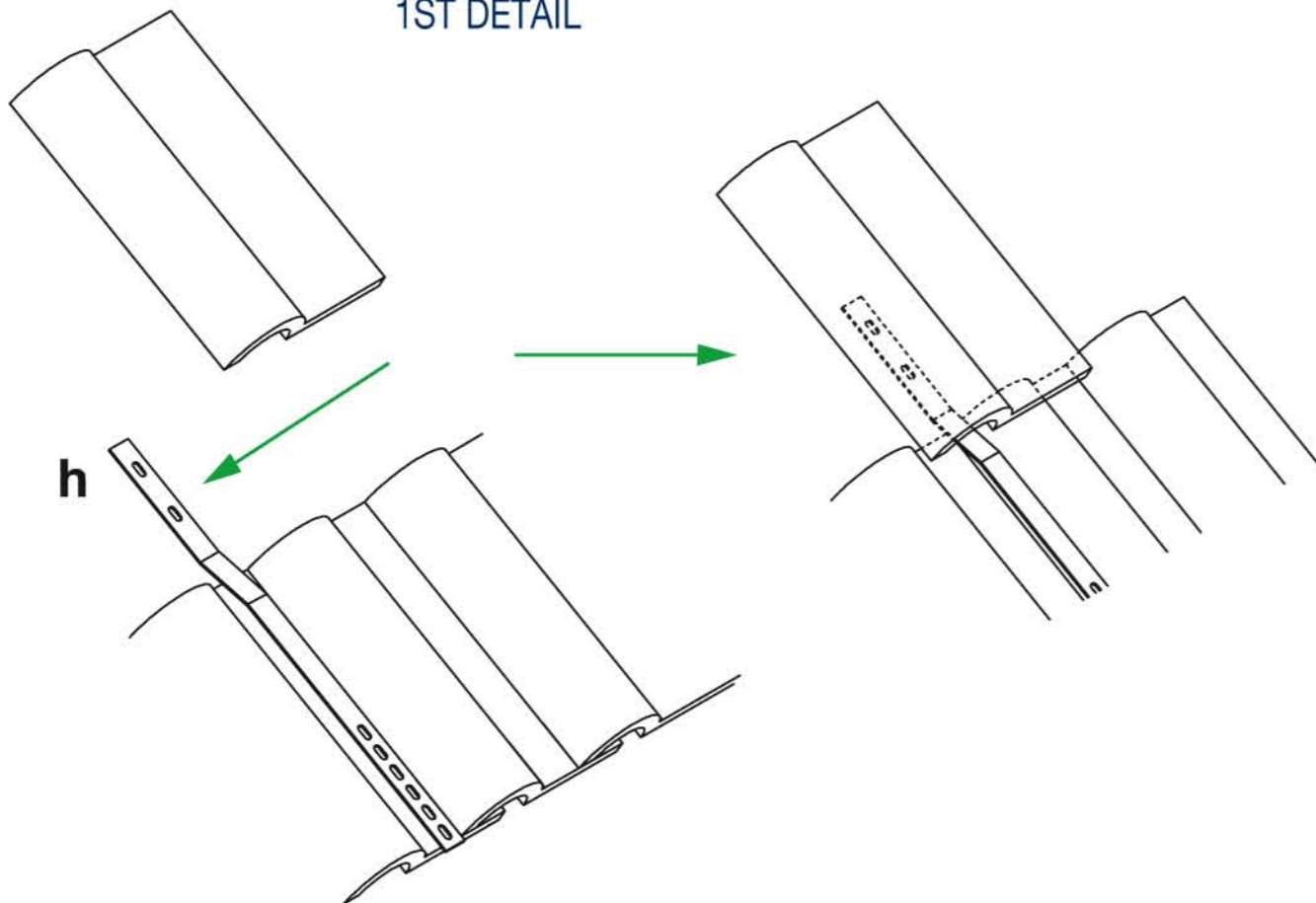
The distance L2 between the "b" track and the outlet point of the "h" element, underneath the tiles will be at least equal to 600mm

The distance L3 between the 2 undertile "h" U-bolts will be equal to 800mm maximum for 1 panel kits, and to 1500mm for 2 or 3 panels kits.

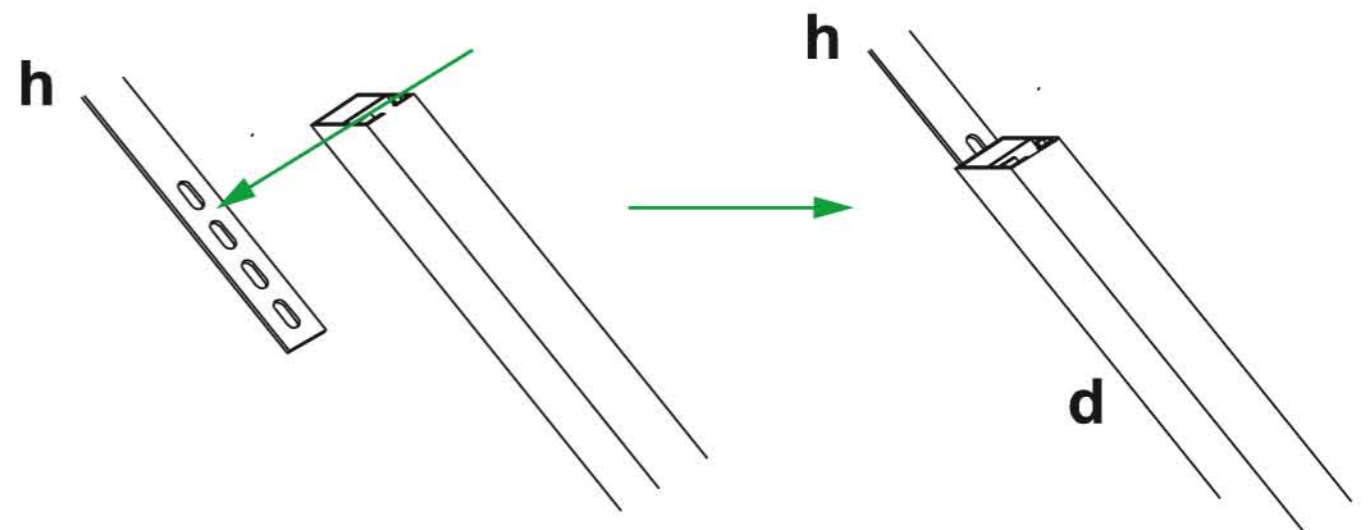


ATTACHMENT DETAILS

1ST DETAIL

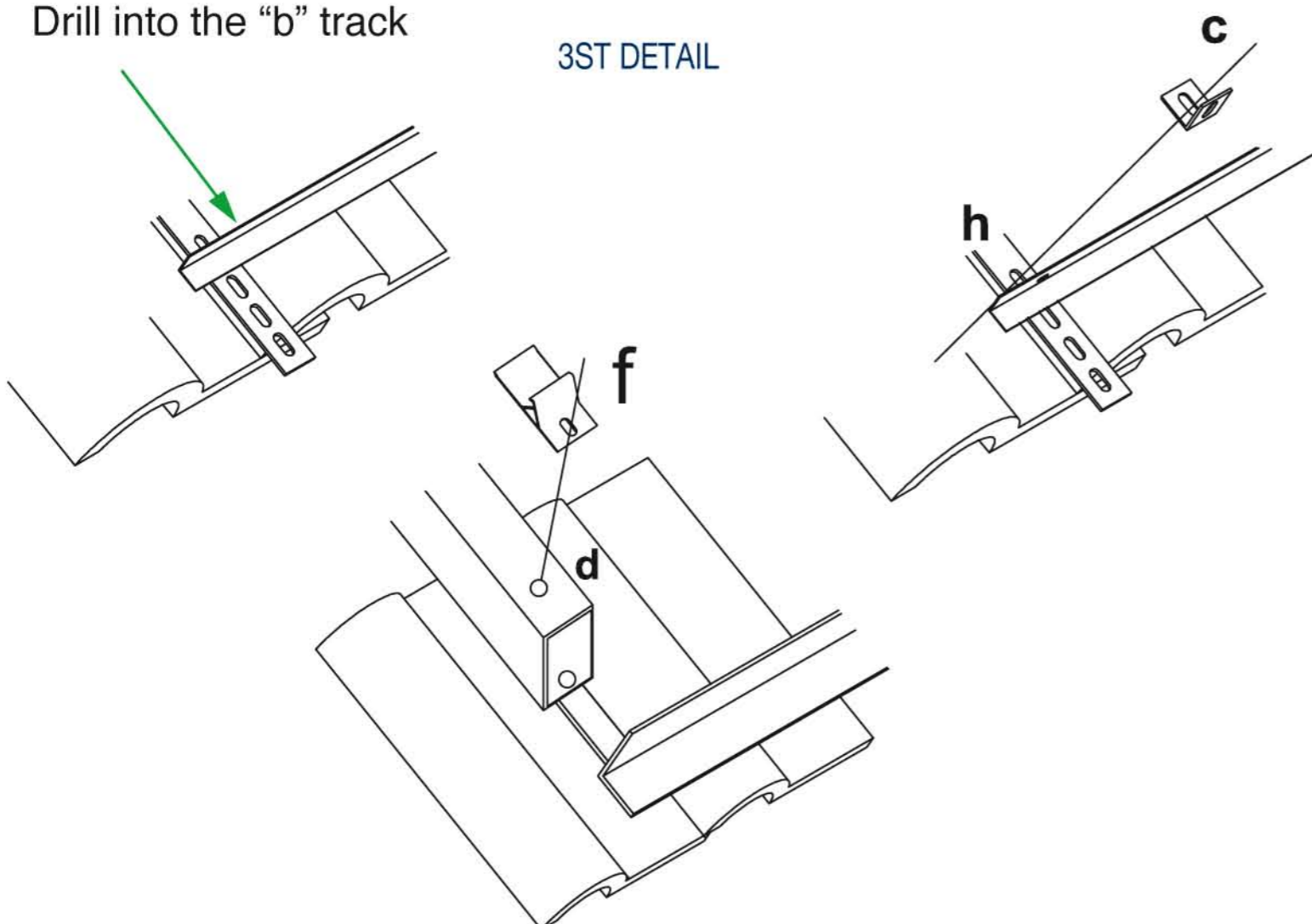


2ST DETAIL

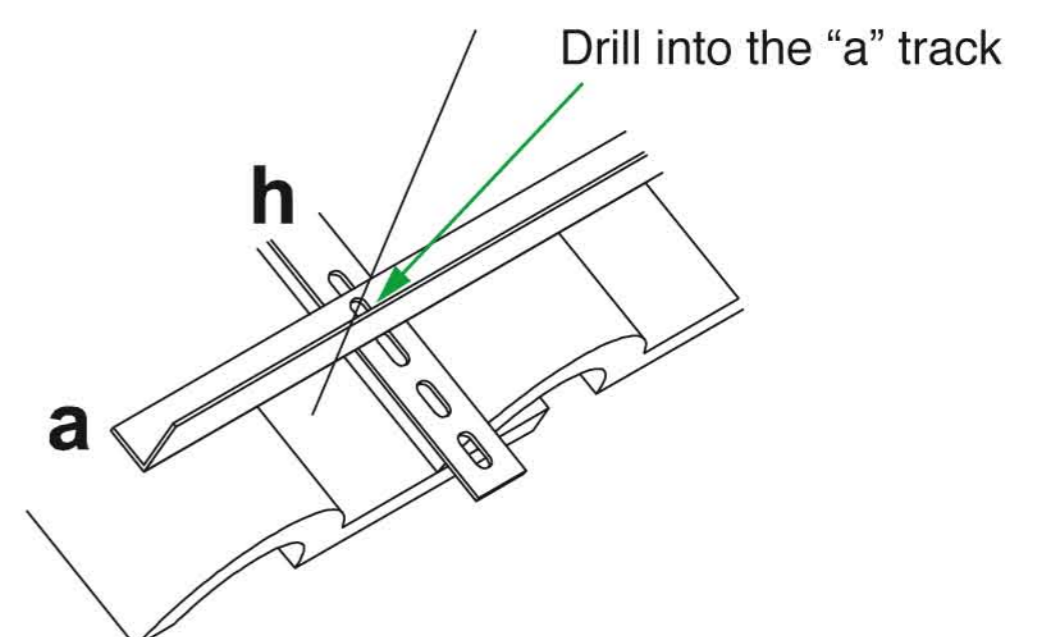


Drill into the "b" track

3ST DETAIL



4ST DETAIL

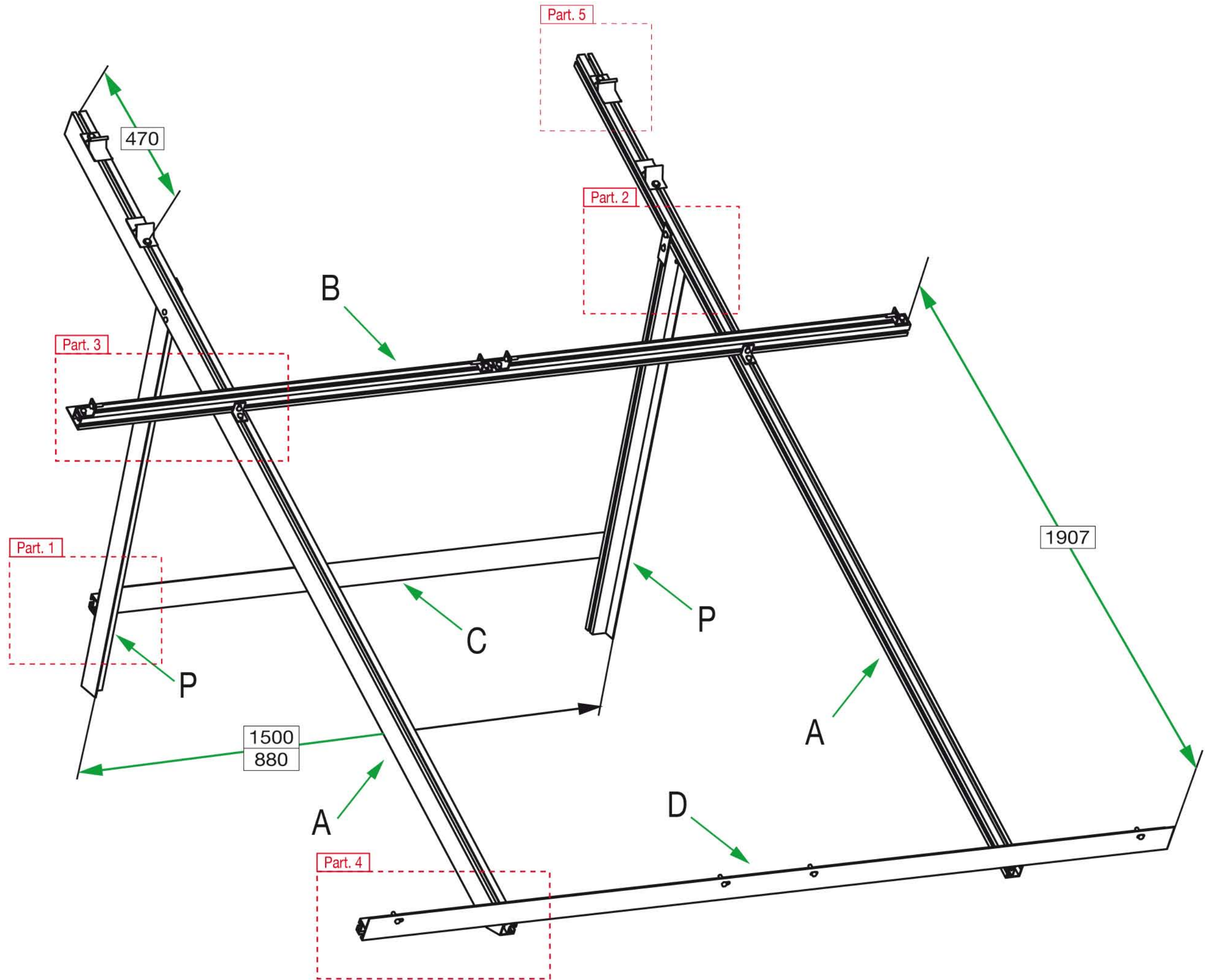




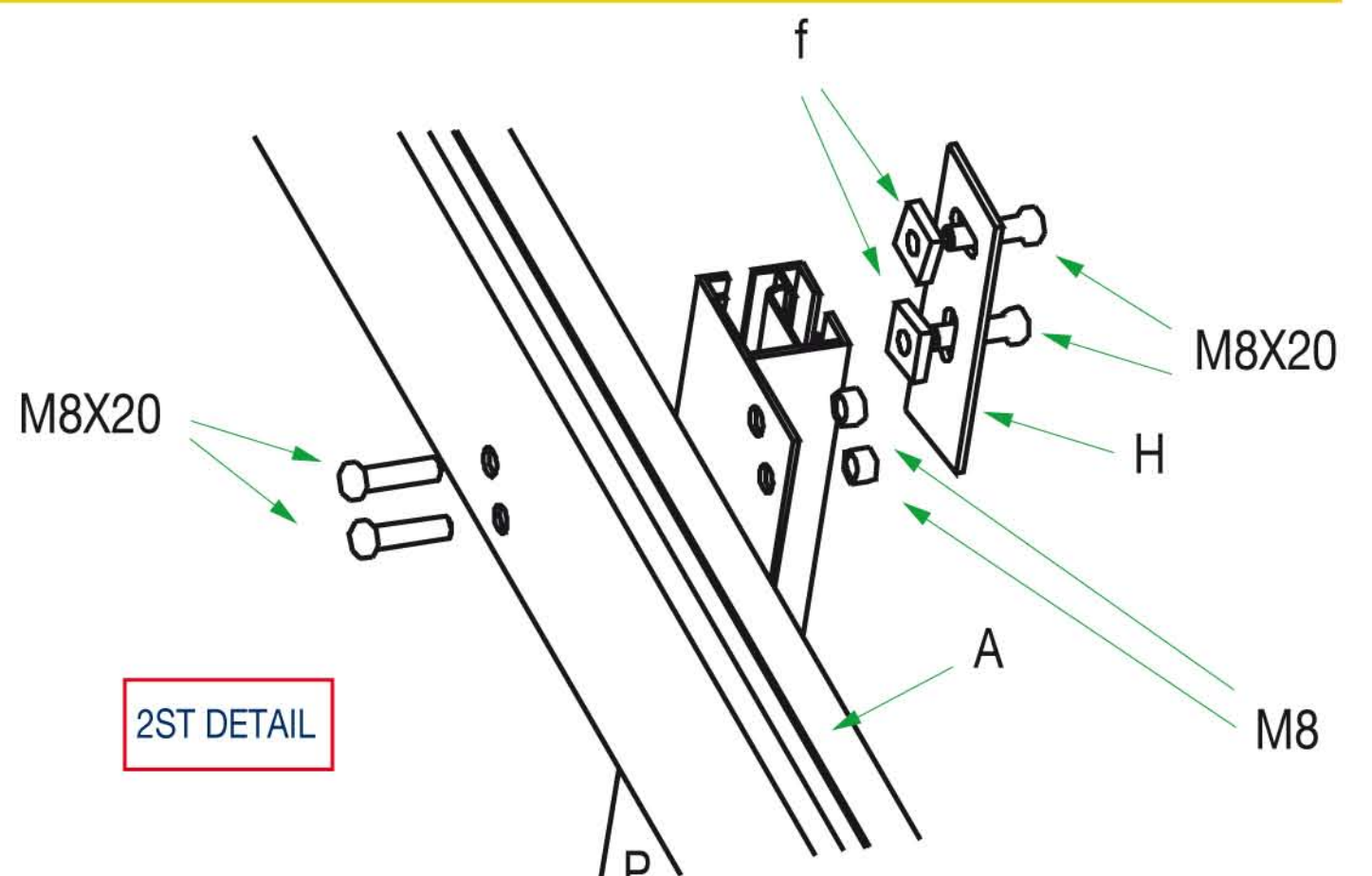
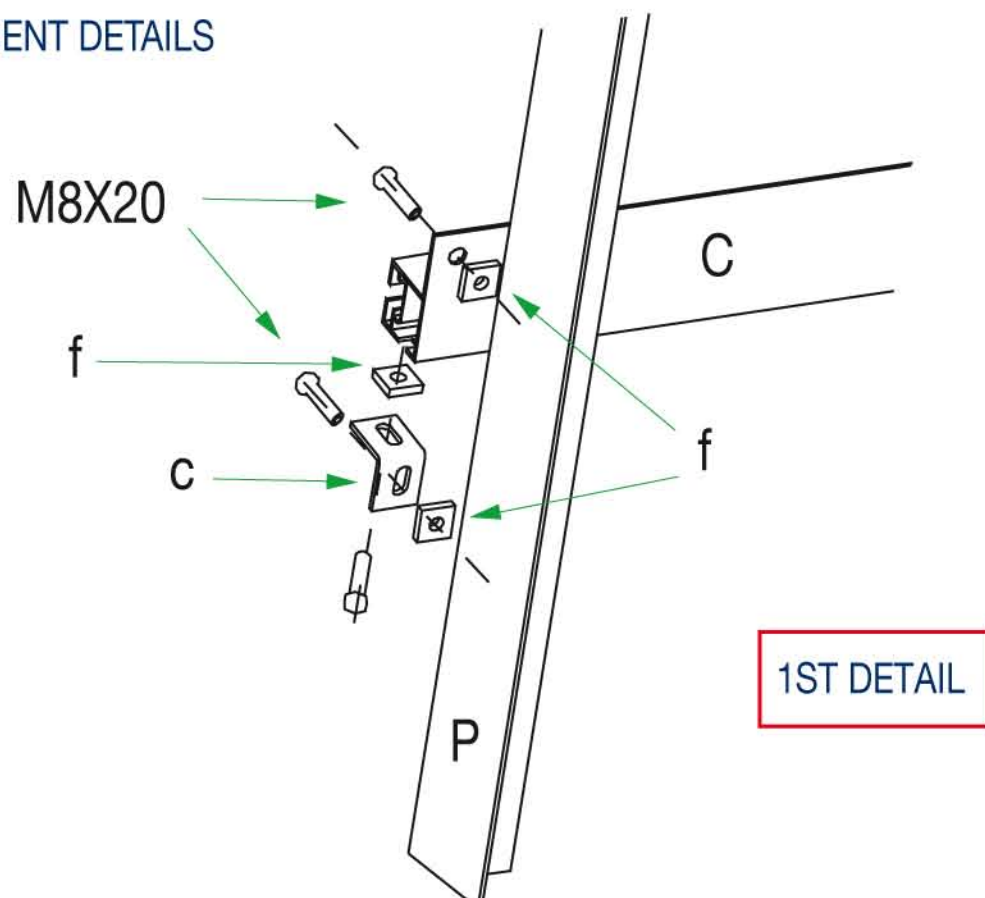
Technical Data Natural circulation support structure kit for flat roofs

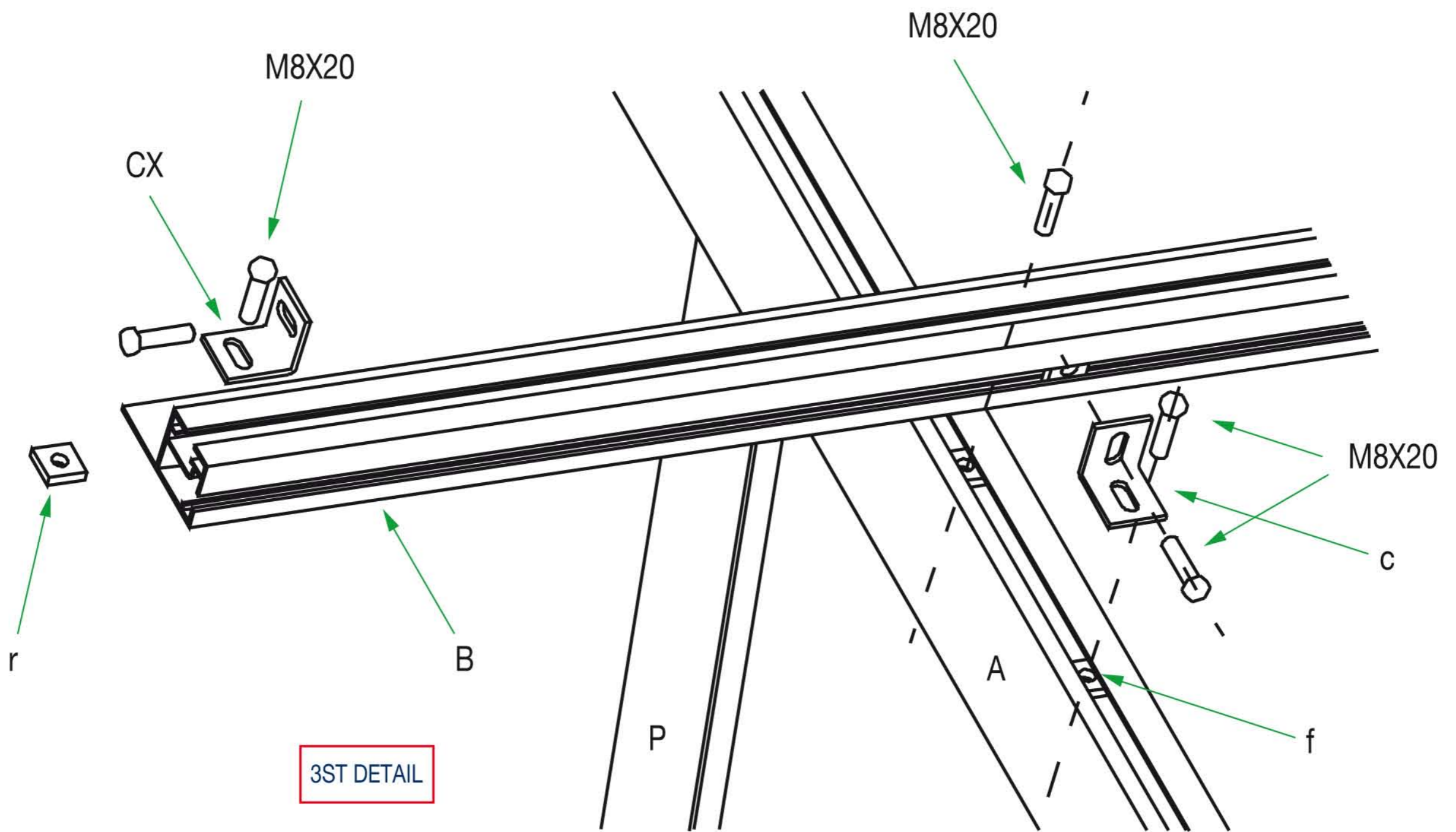
For installation, follow the steps here figured. The given example refers to a double-panel structure. Assembly process is the same for all types of structure.

Componenti	Symbol	CNS 150	CNS 300	KNS 150	KNS 300	KNS 300-3
Longitudinal aluminium track	A	2	2	2	2	2
Upper aluminium track	B	1	1	1	1	1
Back aluminium track	C	1	1	1	1	1
Lower aluminium track	D	1	1	1	1	1
Aluminium foot	P	2	2	2	2	2
Stainless U-bolts	c	8	10	8	10	12
Storage tank anchoring U-bolts	f	4	4	4	4	4



ATTACHMENT DETAILS





4ST DETAIL

